



Segment 1 - Franklin St: Main to 7th

Length: 1,948 LFT
Width: 31 LFT
RS Thickness: 2 IN

Item No.	Description	Quantity	Units
1	Mobilization & Demobilization	1	LS
2	Milling, Asphalt, 1.5 IN	6,764	SYS
3	Milling, Approaches	-	SYS
4	HMA Surface, Type B, 12.5 mm	745	TON
5	HMA for Approaches, Type B	-	TON
6	HMA Wedge and Level, Type B	38	TON
7	HMA Base Repair, Type B, 25.0 mm (6" depth)	112	TON
8	Sidewalk Concrete, Remove	8	SYS
9	Curb, Remove	-	LFT
10	Curb Ramp, Concrete	8	SYS
11	Detectable Warning Surfaces	1	SYS
12	Line, Thermoplastic, Solid, Yellow, 4 IN	3,896	LFT
13	Line, Thermoplastic, Solid, White, 4 IN	80	LFT
14	Line, Thermoplastic, Solid, White, 6 IN	-	LFT
15	Pavement Message Marking, Thermoplastic, Lane Indication Arrow	1	EA
16	Transverse Marking, Thermoplastic, Crosswalk, White, 6 IN	-	LFT
17	Transverse Marking, Thermoplastic, Crosswalk, White, 24 IN	-	LFT
18	Transverse Marking, Thermoplastic, Stop Line, White, 24 IN	16	LFT
19	Transverse Marking, Thermoplastic, Crosshatch Line, Yellow, 12 IN	-	LFT
20	6x6 Loop Detection	8	EA
21	Signal Detector Housing	3	EA
22	Incidental Signal Work	1	LS

Segment 2 - Muskegon Dr: SR 9 to Walnut Tr

Length: 924 LFT
Width: 45 LFT
RS Thickness: 2 IN

Item No.	Description	Quantity	Units
1	Mobilization & Demobilization	1	LS
2	Milling, Asphalt, 1.5 IN	3,807	SYS
3	Milling, Approaches	-	SYS
4	HMA Surface, Type B, 12.5 mm	419	TON
5	HMA for Approaches, Type B	-	TON
6	HMA Wedge and Level, Type B	21	TON
7	HMA Base Repair, Type B, 25.0 mm (6" depth)	63	TON
8	Sidewalk Concrete, Remove	8	SYS
9	Curb, Remove	22	LFT
10	Curb Ramp, Concrete	8	SYS
11	Detectable Warning Surfaces	3	SYS
12	Line, Thermoplastic, Solid, Yellow, 4 IN	2,084	LFT
13	Line, Thermoplastic, Solid, White, 4 IN	740	LFT
14	Line, Thermoplastic, Solid, White, 6 IN	-	LFT
15	Pavement Message Marking, Thermoplastic, Lane Indication Arrow	7	EA
16	Transverse Marking, Thermoplastic, Crosswalk, White, 6 IN	-	LFT
17	Transverse Marking, Thermoplastic, Crosswalk, White, 24 IN	-	LFT
18	Transverse Marking, Thermoplastic, Stop Line, White, 24 IN	36	LFT
19	Transverse Marking, Thermoplastic, Crosshatch Line, Yellow, 12 IN	136	LFT
20	6x6 Loop Detection	16	EA
21	Signal Detector Housing	6	EA
22	Incidental Signal Work	1	LS



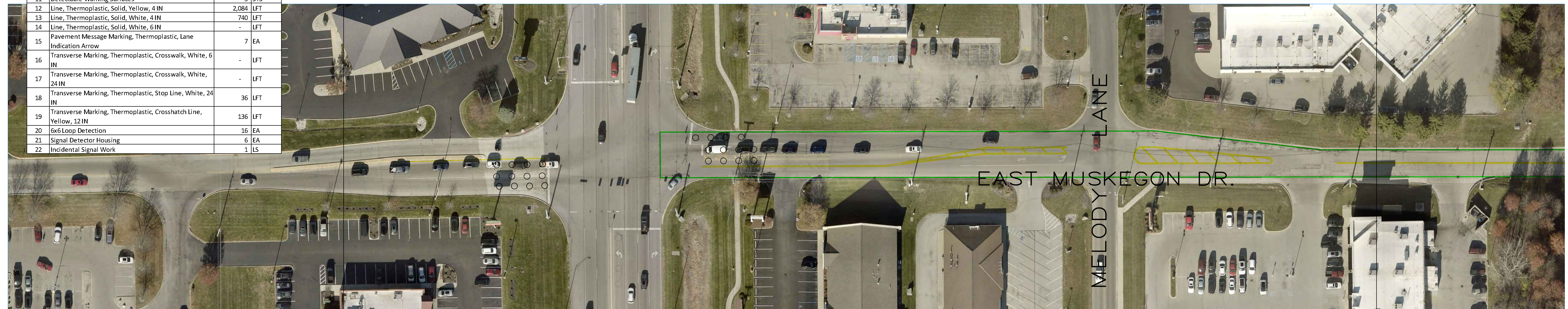
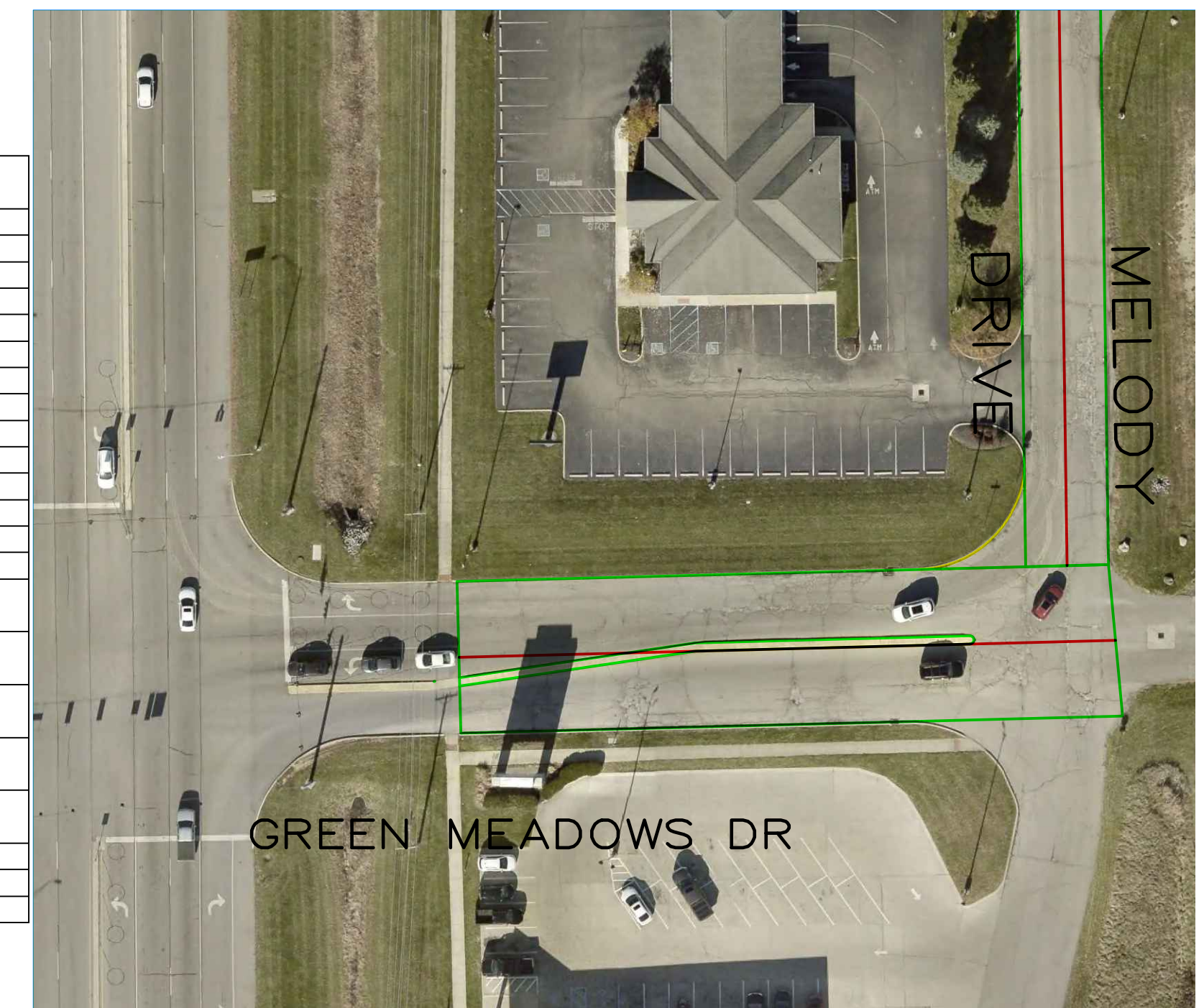
LEGEND

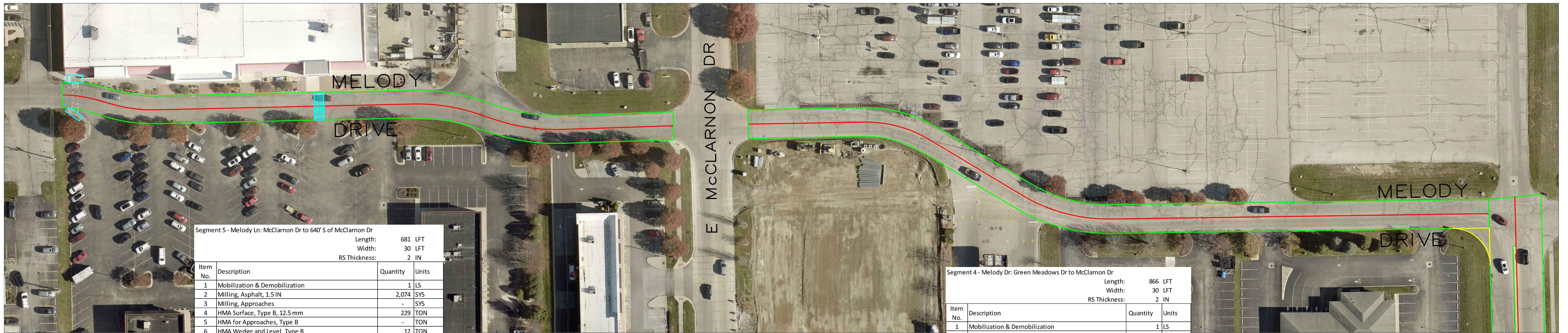
- Centerline —
- Mainline Milling and Paving —
- Approaches Milling and Paving —
- Ramps —

Segment 3 - Green Meadows Dr: SR 9 to Melody Dr

Length: 338 LFT
Width: 55 LFT
RS Thickness: 2 IN

Item No.	Description	Quantity	Units
1	Mobilization & Demobilization	1	LS
2	Milling, Asphalt, 1.5 IN	1,392	SYS
3	Milling, Approaches	-	SYS
4	HMA Surface, Type B, 12.5 mm	154	TON
5	HMA for Approaches, Type B	-	TON
6	HMA Wedge and Level, Type B	8	TON
7	HMA Base Repair, Type B, 25.0 mm (6" depth)	23	TON
8	Sidewalk Concrete, Remove	-	SYS
9	Curb, Remove	-	LFT
10	Curb Ramp, Concrete	-	SYS
11	Detectable Warning Surfaces	-	SYS
12	Line, Thermoplastic, Solid, Yellow, 4 IN	360	LFT
13	Line, Thermoplastic, Solid, White, 4 IN	100	LFT
14	Line, Thermoplastic, Solid, White, 6 IN	-	LFT
15	Pavement Message Marking, Thermoplastic, Lane Indication Arrow	-	EA
16	Transverse Marking, Thermoplastic, Crosswalk, White, 6 IN	-	LFT
17	Transverse Marking, Thermoplastic, Crosswalk, White, 24 IN	-	LFT
18	Transverse Marking, Thermoplastic, Stop Line, White, 24 IN	-	LFT
19	Transverse Marking, Thermoplastic, Crosshatch Line, Yellow, 12 IN	-	LFT
20	6x6 Loop Detection	-	EA
21	Signal Detector Housing	-	EA
22	Incidental Signal Work	-	LS





Segment 5 - Melody Ln: McClarnon Dr to 640' S of McClarnon Dr
 Length: 681 LFT
 Width: 30 LFT
 RS Thickness: 2 IN

Item No.	Description	Quantity	Units
1	Mobilization & Demobilization	1	LS
2	Milling, Asphalt, 1.5 IN	2,074	SYS
3	Milling, Approaches	-	SYS
4	HMA Surface, Type B, 12.5 mm	229	TON
5	HMA for Approaches, Type B	-	TON
6	HMA Wedge and Level, Type B	12	TON
7	HMA Base Repair, Type B, 25.0 mm (6" depth)	69	TON
8	Sidewalk Concrete, Remove	26	SYS
9	Curb, Remove	25	LFT
10	Curb Ramp, Concrete	26	SYS
11	Detectable Warning Surfaces	3	SYS
12	Line, Thermoplastic, Solid, Yellow, 4 IN	1,290	LFT
13	Line, Thermoplastic, Solid, White, 4 IN	-	LFT
14	Line, Thermoplastic, Solid, White, 6 IN	-	LFT
15	Pavement Message Marking, Thermoplastic, Lane Indication Arrow	-	EA
16	Transverse Marking, Thermoplastic, Crosswalk, White, 6 IN	-	LFT
17	Transverse Marking, Thermoplastic, Crosswalk, White, 24 IN	112	LFT
18	Transverse Marking, Thermoplastic, Stop Line, White, 24 IN	15	LFT
19	Transverse Marking, Thermoplastic, Crosshatch Line, Yellow, 12 IN	-	LFT
20	6x6 Loop Detection	-	EA
21	Signal Detector Housing	-	EA
22	Incidental Signal Work	-	LS

Segment 4 - Melody Dr: Green Meadows Dr to McClarnon Dr
 Length: 866 LFT
 Width: 30 LFT
 RS Thickness: 2 IN

Item No.	Description	Quantity	Units
1	Mobilization & Demobilization	1	LS
2	Milling, Asphalt, 1.5 IN	2,664	SYS
3	Milling, Approaches	36	SYS
4	HMA Surface, Type B, 12.5 mm	294	TON
5	HMA for Approaches, Type B	4	TON
6	HMA Wedge and Level, Type B	15	TON
7	HMA Base Repair, Type B, 25.0 mm (6" depth)	44	TON
8	Sidewalk Concrete, Remove	-	SYS
9	Curb, Remove	-	LFT
10	Curb Ramp, Concrete	-	SYS
11	Detectable Warning Surfaces	-	SYS
12	Line, Thermoplastic, Solid, Yellow, 4 IN	1,600	LFT
13	Line, Thermoplastic, Solid, White, 4 IN	-	LFT
14	Line, Thermoplastic, Solid, White, 6 IN	-	LFT
15	Pavement Message Marking, Thermoplastic, Lane Indication Arrow	-	EA
16	Transverse Marking, Thermoplastic, Crosswalk, White, 6 IN	-	LFT
17	Transverse Marking, Thermoplastic, Crosswalk, White, 24 IN	-	LFT
18	Transverse Marking, Thermoplastic, Stop Line, White, 24 IN	40	LFT
19	Transverse Marking, Thermoplastic, Crosshatch Line, Yellow, 12 IN	-	LFT
20	6x6 Loop Detection	-	EA
21	Signal Detector Housing	-	EA
22	Incidental Signal Work	-	LS

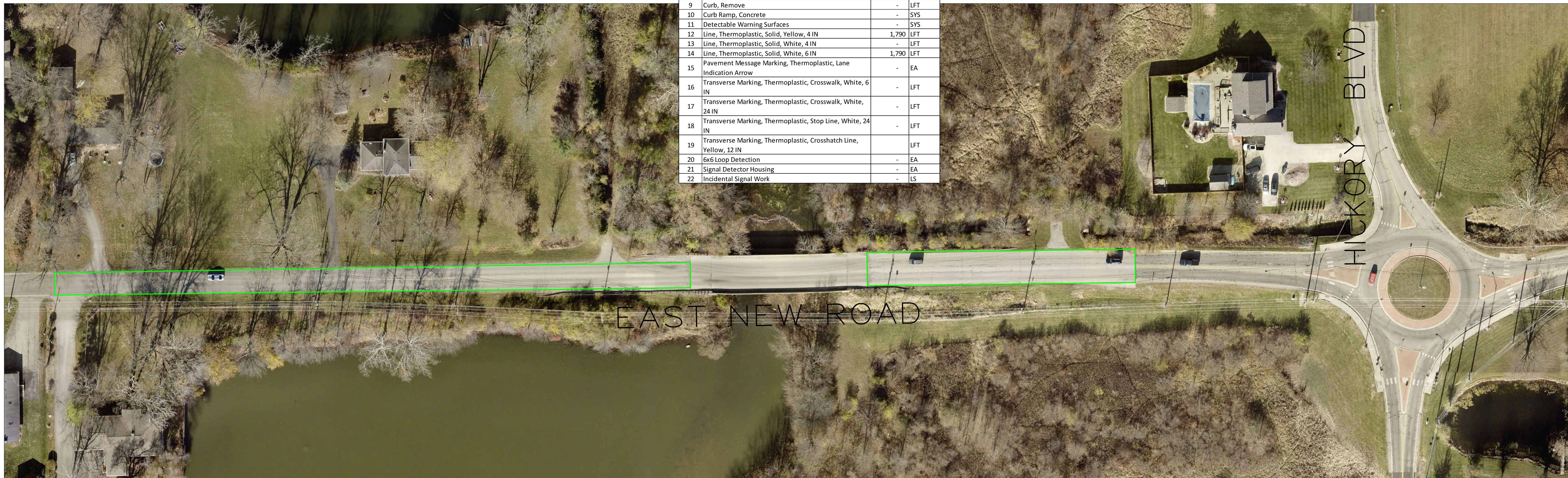
Segment 6 - New Rd: 740' E of Martindale to Apple
 Length: 1,072 LFT
 Width: 22 LFT
 RS Thickness: 2 IN

Item No.	Description	Quantity	Units
1	Mobilization & Demobilization	1	LS
2	Milling, Asphalt, 1.5 IN	2,623	SYS
3	Milling, Approaches	-	SYS
4	HMA Surface, Type B, 12.5 mm	289	TON
5	HMA for Approaches, Type B	-	TON
6	HMA Wedge and Level, Type B	15	TON
7	HMA Base Repair, Type B, 25.0 mm (6" depth)	44	TON
8	Sidewalk Concrete, Remove	-	SYS
9	Curb, Remove	-	LFT
10	Curb Ramp, Concrete	-	SYS
11	Detectable Warning Surfaces	-	SYS
12	Line, Thermoplastic, Solid, Yellow, 4 IN	1,790	LFT
13	Line, Thermoplastic, Solid, White, 4 IN	-	LFT
14	Line, Thermoplastic, Solid, White, 6 IN	1,790	LFT
15	Pavement Message Marking, Thermoplastic, Lane Indication Arrow	-	EA
16	Transverse Marking, Thermoplastic, Crosswalk, White, 6 IN	-	LFT
17	Transverse Marking, Thermoplastic, Crosswalk, White, 24 IN	-	LFT
18	Transverse Marking, Thermoplastic, Stop Line, White, 24 IN	-	LFT
19	Transverse Marking, Thermoplastic, Crosshatch Line, Yellow, 12 IN	-	LFT
20	6x6 Loop Detection	-	EA
21	Signal Detector Housing	-	EA
22	Incidental Signal Work	-	LS



LEGEND

- Centerline —
- Mainline Milling and Paving —
- Approaches Milling and Paving —
- Ramps —



Segment 11 - Clove Dr: Eucalyptus to Jasmine

Length: 238 LFT
 Width: 26 LFT
 RS Thickness: 2 IN

Item No.	Description	Quantity	Units
1	Mobilization & Demobilization	1	LS
2	Milling, Asphalt, 1.5 IN	735	SYS
3	Milling, Approaches	14	SYS
4	HMA Surface, Type B, 12.5 mm	81	TON
5	HMA for Approaches, Type B	2	TON
6	HMA Wedge and Level, Type B	5	TON
7	HMA Base Repair, Type B, 25.0 mm (6" depth)	13	TON
8	Sidewalk Concrete, Remove	12	SYS
9	Curb, Remove	22	LFT
10	Curb Ramp, Concrete	16	SYS
11	Detectable Warning Surfaces	3	SYS
12	Line, Thermoplastic, Solid, Yellow, 4 IN	-	LFT
13	Line, Thermoplastic, Solid, White, 4 IN	-	LFT
14	Line, Thermoplastic, Solid, White, 6 IN	-	LFT
15	Pavement Message Marking, Thermoplastic, Lane Indication Arrow	-	EA
16	Transverse Marking, Thermoplastic, Crosswalk, White, 6 IN	-	LFT
17	Transverse Marking, Thermoplastic, Crosswalk, White, 24 IN	-	LFT
18	Transverse Marking, Thermoplastic, Stop Line, White, 24 IN	13	LFT
19	Transverse Marking, Thermoplastic, Crosshatch Line, Yellow, 12 IN	-	LFT
20	6x6 Loop Detection	-	EA
21	Signal Detector Housing	-	EA
22	Incidental Signal Work	-	LS



Segment 10 - Eucalyptus Cir: Clove to Cul-de-sac

Length: 444 LFT
 Width: 26 LFT
 RS Thickness: 2 IN

Item No.	Description	Quantity	Units
1	Mobilization & Demobilization	1	LS
2	Milling, Asphalt, 1.5 IN	1,127	SYS
3	Milling, Approaches	360	SYS
4	HMA Surface, Type B, 12.5 mm	124	TON
5	HMA for Approaches, Type B	40	TON
6	HMA Wedge and Level, Type B	7	TON
7	HMA Base Repair, Type B, 25.0 mm (6" depth)	19	TON
8	Sidewalk Concrete, Remove	12	SYS
9	Curb, Remove	22	LFT
10	Curb Ramp, Concrete	16	SYS
11	Detectable Warning Surfaces	3	SYS
12	Line, Thermoplastic, Solid, Yellow, 4 IN	-	LFT
13	Line, Thermoplastic, Solid, White, 4 IN	-	LFT
14	Line, Thermoplastic, Solid, White, 6 IN	-	LFT
15	Pavement Message Marking, Thermoplastic, Lane Indication Arrow	-	EA
16	Transverse Marking, Thermoplastic, Crosswalk, White, 6 IN	-	LFT
17	Transverse Marking, Thermoplastic, Crosswalk, White, 24 IN	-	LFT
18	Transverse Marking, Thermoplastic, Stop Line, White, 24 IN	13	LFT
19	Transverse Marking, Thermoplastic, Crosshatch Line, Yellow, 12 IN	-	LFT
20	6x6 Loop Detection	-	EA
21	Signal Detector Housing	-	EA
22	Incidental Signal Work	-	LS



Segment 8 - Woodstream Dr: Carlton to Sweetwater

Length: 713 LFT
 Width: 26 LFT
 RS Thickness: 2 IN

Item No.	Description	Quantity	Units
1	Mobilization & Demobilization	1	LS
2	Milling, Asphalt, 1.5 IN	2,003	SYS
3	Milling, Approaches	12	SYS
4	HMA Surface, Type B, 12.5 mm	221	TON
5	HMA for Approaches, Type B	2	TON
6	HMA Wedge and Level, Type B	12	TON
7	HMA Base Repair, Type B, 25.0 mm (6" depth)	34	TON
8	Sidewalk Concrete, Remove	6	SYS
9	Curb, Remove	11	LFT
10	Curb Ramp, Concrete	6	SYS
11	Detectable Warning Surfaces	2	SYS
12	Line, Thermoplastic, Solid, Yellow, 4 IN	-	LFT
13	Line, Thermoplastic, Solid, White, 4 IN	-	LFT
14	Line, Thermoplastic, Solid, White, 6 IN	-	LFT
15	Pavement Message Marking, Thermoplastic, Lane Indication Arrow	-	EA
16	Transverse Marking, Thermoplastic, Crosswalk, White, 6 IN	-	LFT
17	Transverse Marking, Thermoplastic, Crosswalk, White, 24 IN	-	LFT
18	Transverse Marking, Thermoplastic, Stop Line, White, 24 IN	-	LFT
19	Transverse Marking, Thermoplastic, Crosshatch Line, Yellow, 12 IN	-	LFT
20	6x6 Loop Detection	-	EA
21	Signal Detector Housing	-	EA
22	Incidental Signal Work	-	LS

Segment 7 - Carlton Dr: Brookstone to Woodstream

Length: 781 LFT
 Width: 26 LFT
 RS Thickness: 2 IN

Item No.	Description	Quantity	Units
1	Mobilization & Demobilization	1	LS
2	Milling, Asphalt, 1.5 IN	2,394	SYS
3	Milling, Approaches	24	SYS
4	HMA Surface, Type B, 12.5 mm	264	TON
5	HMA for Approaches, Type B	3	TON
6	HMA Wedge and Level, Type B	14	TON
7	HMA Base Repair, Type B, 25.0 mm (6" depth)	40	TON
8	Sidewalk Concrete, Remove	12	SYS
9	Curb, Remove	22	LFT
10	Curb Ramp, Concrete	12	SYS
11	Detectable Warning Surfaces	3	SYS
12	Line, Thermoplastic, Solid, Yellow, 4 IN	-	LFT
13	Line, Thermoplastic, Solid, White, 4 IN	-	LFT
14	Line, Thermoplastic, Solid, White, 6 IN	-	LFT
15	Pavement Message Marking, Thermoplastic, Lane Indication Arrow	-	EA
16	Transverse Marking, Thermoplastic, Crosswalk, White, 6 IN	-	LFT
17	Transverse Marking, Thermoplastic, Crosswalk, White, 24 IN	-	LFT
18	Transverse Marking, Thermoplastic, Stop Line, White, 24 IN	13	LFT
19	Transverse Marking, Thermoplastic, Crosshatch Line, Yellow, 12 IN	-	LFT
20	6x6 Loop Detection	-	EA
21	Signal Detector Housing	-	EA
22	Incidental Signal Work	-	LS

Segment 9 - Woodstream Ct: Cul-de-sac to Carlton

Length: 285 LFT
 Width: 26 LFT
 RS Thickness: 2 IN

Item No.	Description	Quantity	Units
1	Mobilization & Demobilization	1	LS
2	Milling, Asphalt, 1.5 IN	917	SYS
3	Milling, Approaches	250	SYS
4	HMA Surface, Type B, 12.5 mm	101	TON
5	HMA for Approaches, Type B	28	TON
6	HMA Wedge and Level, Type B	6	TON
7	HMA Base Repair, Type B, 25.0 mm (6" depth)	16	TON
8	Sidewalk Concrete, Remove	-	SYS
9	Curb, Remove	-	LFT
10	Curb Ramp, Concrete	-	SYS
11	Detectable Warning Surfaces	-	SYS
12	Line, Thermoplastic, Solid, Yellow, 4 IN	-	LFT
13	Line, Thermoplastic, Solid, White, 4 IN	-	LFT
14	Line, Thermoplastic, Solid, White, 6 IN	-	LFT
15	Pavement Message Marking, Thermoplastic, Lane Indication Arrow	-	EA
16	Transverse Marking, Thermoplastic, Crosswalk, White, 6 IN	-	LFT
17	Transverse Marking, Thermoplastic, Crosswalk, White, 24 IN	-	LFT
18	Transverse Marking, Thermoplastic, Stop Line, White, 24 IN	-	LFT
19	Transverse Marking, Thermoplastic, Crosshatch Line, Yellow, 12 IN	-	LFT
20	6x6 Loop Detection	-	EA
21	Signal Detector Housing	-	EA
22	Incidental Signal Work	-	LS



LEGEND	
Centerline	
Mainline Milling and Paving	
Approaches Milling and Paving	
Ramps	



Segment 12 - Evergreen Dr Blue to McClarnon
 Length: 2,228 LFT
 Width: 26 LFT
 RS Thickness: 2 IN

Item No.	Description	Quantity	Units
1	Mobilization & Demobilization	1	LS
2	Milling, Asphalt, 1.5 IN	6,452	SYS
3	Milling, Approaches	98	SYS
4	HMA Surface, Type B, 12.5 mm	710	TON
5	HMA for Approaches, Type B	11	TON
6	HMA Wedge and Level, Type B	36	TON
7	HMA Base Repair, Type B, 25.0 mm (6" depth)	107	TON
8	Sidewalk Concrete, Remove	36	SYS
9	Curb, Remove	66	LFT
10	Curb Ramp, Concrete	48	SYS
11	Detectable Warning Surfaces	9	SYS
12	Line, Thermoplastic, Solid, Yellow, 4 IN	-	LFT
13	Line, Thermoplastic, Solid, White, 4 IN	-	LFT
14	Line, Thermoplastic, Solid, White, 6 IN	-	LFT
15	Pavement Message Marking, Thermoplastic, Lane Indication Arrow	-	EA
16	Transverse Marking, Thermoplastic, Crosswalk, White, 6 IN	-	LFT
17	Transverse Marking, Thermoplastic, Crosswalk, White, 24 IN	-	LFT
18	Transverse Marking, Thermoplastic, Stop Line, White, 24 IN	30	LFT
19	Transverse Marking, Thermoplastic, Crosshatch Line, Yellow, 12 IN	-	LFT
20	6x6 Loop Detection	-	EA
21	Signal Detector Housing	-	EA
22	Incidental Signal Work	-	LS

Segment 13 - Mulberry Ct: Evergreen to Cul-de-sac
 Length: 620 LFT
 Width: 26 LFT
 RS Thickness: 2 IN

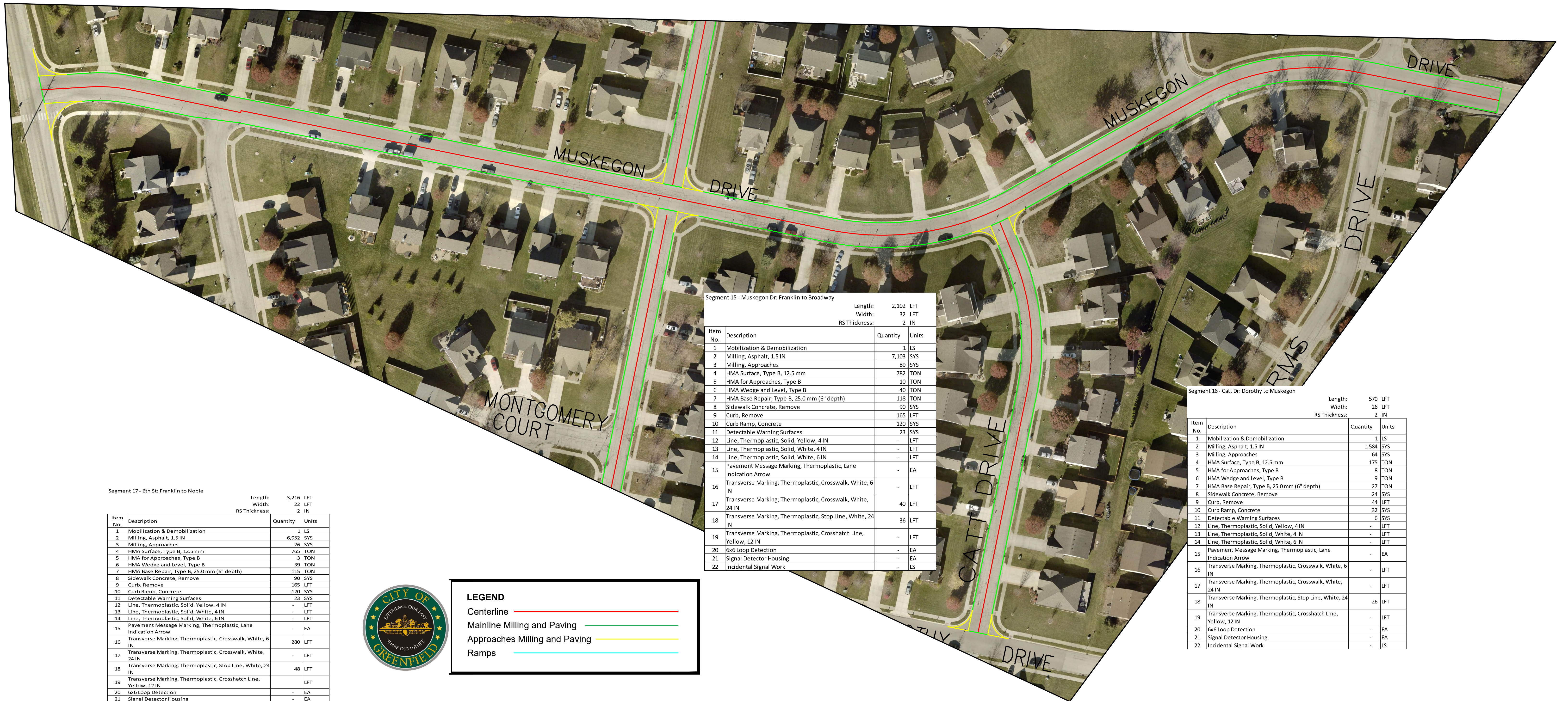
Item No.	Description	Quantity	Units
1	Mobilization & Demobilization	1	LS
2	Milling, Asphalt, 1.5 IN	1,527	SYS
3	Milling, Approaches	324	SYS
4	HMA Surface, Type B, 12.5 mm	168	TON
5	HMA for Approaches, Type B	36	TON
6	HMA Wedge and Level, Type B	9	TON
7	HMA Base Repair, Type B, 25.0 mm (6" depth)	26	TON
8	Sidewalk Concrete, Remove	12	SYS
9	Curb, Remove	22	LFT
10	Curb Ramp, Concrete	16	SYS
11	Detectable Warning Surfaces	3	SYS
12	Line, Thermoplastic, Solid, Yellow, 4 IN	-	LFT
13	Line, Thermoplastic, Solid, White, 4 IN	-	LFT
14	Line, Thermoplastic, Solid, White, 6 IN	-	LFT
15	Pavement Message Marking, Thermoplastic, Lane Indication Arrow	-	EA
16	Transverse Marking, Thermoplastic, Crosswalk, White, 6 IN	-	LFT
17	Transverse Marking, Thermoplastic, Crosswalk, White, 24 IN	-	LFT
18	Transverse Marking, Thermoplastic, Stop Line, White, 24 IN	13	LFT
19	Transverse Marking, Thermoplastic, Crosshatch Line, Yellow, 12 IN	-	LFT
20	6x6 Loop Detection	-	EA
21	Signal Detector Housing	-	EA
22	Incidental Signal Work	-	LS

Segment 14 - Hedge Ct: Cul-de-sac to McClarnon
 Length: 581 LFT
 Width: 26 LFT
 RS Thickness: 2 IN

Item No.	Description	Quantity	Units
1	Mobilization & Demobilization	1	LS
2	Milling, Asphalt, 1.5 IN	1,450	SYS
3	Milling, Approaches	321	SYS
4	HMA Surface, Type B, 12.5 mm	160	TON
5	HMA for Approaches, Type B	36	TON
6	HMA Wedge and Level, Type B	8	TON
7	HMA Base Repair, Type B, 25.0 mm (6" depth)	24	TON
8	Sidewalk Concrete, Remove	12	SYS
9	Curb, Remove	22	LFT
10	Curb Ramp, Concrete	16	SYS
11	Detectable Warning Surfaces	3	SYS
12	Line, Thermoplastic, Solid, Yellow, 4 IN	-	LFT
13	Line, Thermoplastic, Solid, White, 4 IN	-	LFT
14	Line, Thermoplastic, Solid, White, 6 IN	-	LFT
15	Pavement Message Marking, Thermoplastic, Lane Indication Arrow	-	EA
16	Transverse Marking, Thermoplastic, Crosswalk, White, 6 IN	-	LFT
17	Transverse Marking, Thermoplastic, Crosswalk, White, 24 IN	-	LFT
18	Transverse Marking, Thermoplastic, Stop Line, White, 24 IN	13	LFT
19	Transverse Marking, Thermoplastic, Crosshatch Line, Yellow, 12 IN	-	LFT
20	6x6 Loop Detection	-	EA
21	Signal Detector Housing	-	EA
22	Incidental Signal Work	-	LS



LEGEND	
Centerline	—
Mainline Milling and Paving	—
Approaches Milling and Paving	—
Ramps	—



Segment 17 - 6th St: Franklin to Noble

Length: 3,216 LFT
Width: 22 LFT
RS Thickness: 2 IN

Item No.	Description	Quantity	Units
1	Mobilization & Demobilization	1	LS
2	Milling, Asphalt, 1.5 IN	6,952	SYS
3	Milling, Approaches	26	SYS
4	HMA Surface, Type B, 12.5 mm	765	TON
5	HMA for Approaches, Type B	3	TON
6	HMA Wedge and Level, Type B	39	TON
7	HMA Base Repair, Type B, 25.0 mm (6" depth)	115	TON
8	Sidewalk Concrete, Remove	90	SYS
9	Curb, Remove	165	LFT
10	Curb Ramp, Concrete	120	SYS
11	Detectable Warning Surfaces	23	SYS
12	Line, Thermoplastic, Solid, Yellow, 4 IN	-	LFT
13	Line, Thermoplastic, Solid, White, 4 IN	-	LFT
14	Line, Thermoplastic, Solid, White, 6 IN	-	LFT
15	Pavement Message Marking, Thermoplastic, Lane Indication Arrow	-	EA
16	Transverse Marking, Thermoplastic, Crosswalk, White, 6 IN	280	LFT
17	Transverse Marking, Thermoplastic, Crosswalk, White, 24 IN	-	LFT
18	Transverse Marking, Thermoplastic, Stop Line, White, 24 IN	48	LFT
19	Transverse Marking, Thermoplastic, Crosshatch Line, Yellow, 12 IN	-	LFT
20	6x6 Loop Detection	-	EA
21	Signal Detector Housing	-	EA
22	Incidental Signal Work	-	LS

Segment 15 - Muskegon Dr: Franklin to Broadway

Length: 2,102 LFT
Width: 32 LFT
RS Thickness: 2 IN

Item No.	Description	Quantity	Units
1	Mobilization & Demobilization	1	LS
2	Milling, Asphalt, 1.5 IN	7,103	SYS
3	Milling, Approaches	89	SYS
4	HMA Surface, Type B, 12.5 mm	782	TON
5	HMA for Approaches, Type B	10	TON
6	HMA Wedge and Level, Type B	40	TON
7	HMA Base Repair, Type B, 25.0 mm (6" depth)	118	TON
8	Sidewalk Concrete, Remove	90	SYS
9	Curb, Remove	165	LFT
10	Curb Ramp, Concrete	120	SYS
11	Detectable Warning Surfaces	23	SYS
12	Line, Thermoplastic, Solid, Yellow, 4 IN	-	LFT
13	Line, Thermoplastic, Solid, White, 4 IN	-	LFT
14	Line, Thermoplastic, Solid, White, 6 IN	-	LFT
15	Pavement Message Marking, Thermoplastic, Lane Indication Arrow	-	EA
16	Transverse Marking, Thermoplastic, Crosswalk, White, 6 IN	-	LFT
17	Transverse Marking, Thermoplastic, Crosswalk, White, 24 IN	40	LFT
18	Transverse Marking, Thermoplastic, Stop Line, White, 24 IN	36	LFT
19	Transverse Marking, Thermoplastic, Crosshatch Line, Yellow, 12 IN	-	LFT
20	6x6 Loop Detection	-	EA
21	Signal Detector Housing	-	EA
22	Incidental Signal Work	-	LS

Segment 16 - Catt Dr: Dorothy to Muskegon

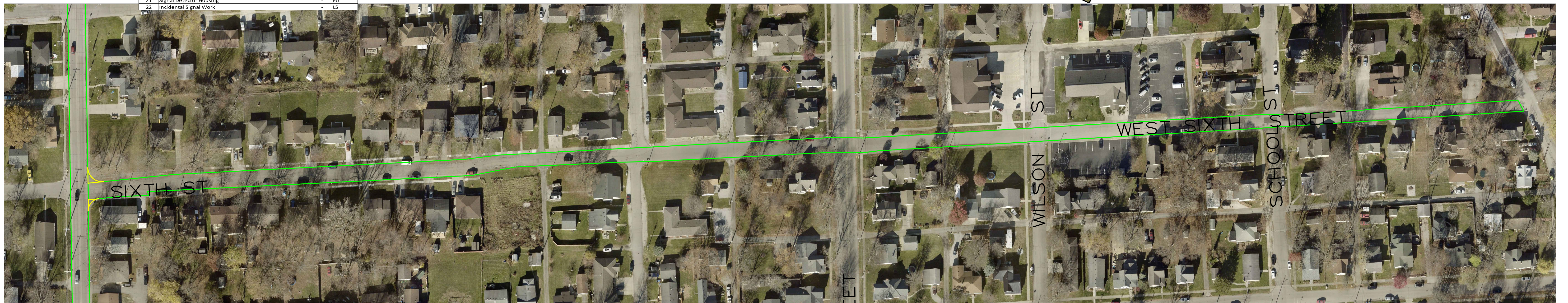
Length: 570 LFT
Width: 26 LFT
RS Thickness: 2 IN

Item No.	Description	Quantity	Units
1	Mobilization & Demobilization	1	LS
2	Milling, Asphalt, 1.5 IN	1,584	SYS
3	Milling, Approaches	64	SYS
4	HMA Surface, Type B, 12.5 mm	175	TON
5	HMA for Approaches, Type B	8	TON
6	HMA Wedge and Level, Type B	9	TON
7	HMA Base Repair, Type B, 25.0 mm (6" depth)	27	TON
8	Sidewalk Concrete, Remove	24	SYS
9	Curb, Remove	44	LFT
10	Curb Ramp, Concrete	32	SYS
11	Detectable Warning Surfaces	6	SYS
12	Line, Thermoplastic, Solid, Yellow, 4 IN	-	LFT
13	Line, Thermoplastic, Solid, White, 4 IN	-	LFT
14	Line, Thermoplastic, Solid, White, 6 IN	-	LFT
15	Pavement Message Marking, Thermoplastic, Lane Indication Arrow	-	EA
16	Transverse Marking, Thermoplastic, Crosswalk, White, 6 IN	-	LFT
17	Transverse Marking, Thermoplastic, Crosswalk, White, 24 IN	-	LFT
18	Transverse Marking, Thermoplastic, Stop Line, White, 24 IN	26	LFT
19	Transverse Marking, Thermoplastic, Crosshatch Line, Yellow, 12 IN	-	LFT
20	6x6 Loop Detection	-	EA
21	Signal Detector Housing	-	EA
22	Incidental Signal Work	-	LS



LEGEND

- Centerline —
- Mainline Milling and Paving —
- Approaches Milling and Paving —
- Ramps —





Segment 18 - Noble St: US 40 to Walnut

Length: 655 LFT
Width: 30 LFT
RS Thickness: 2 IN

Item No.	Description	Quantity	Units
1	Mobilization & Demobilization	1	LS
2	Milling, Asphalt, 1.5 IN	2,170	SYS
3	Milling, Approaches	9	SYS
4	HMA Surface, Type B, 12.5 mm	239	TON
5	HMA for Approaches, Type B	1	TON
6	HMA Wedge and Level, Type B	12	TON
7	HMA Base Repair, Type B, 25.0 mm (6" depth)	36	TON
8	Sidewalk Concrete, Remove	36	SYS
9	Curb, Remove	66	LFT
10	Curb Ramp, Concrete	48	SYS
11	Detectable Warning Surfaces	9	SYS
12	Line, Thermoplastic, Solid, Yellow, 4IN	-	LFT
13	Line, Thermoplastic, Solid, White, 4IN	-	LFT
14	Line, Thermoplastic, Solid, White, 6IN	-	LFT
15	Pavement Message Marking, Thermoplastic, Lane Indication Arrow	-	EA
16	Transverse Marking, Thermoplastic, Crosswalk, White, 6 IN	180	LFT
17	Transverse Marking, Thermoplastic, Crosswalk, White, 24 IN	-	LFT
18	Transverse Marking, Thermoplastic, Stop Line, White, 24 IN	45	LFT
19	Transverse Marking, Thermoplastic, Crosshatch Line, Yellow, 12 IN	-	LFT
20	6x6 Loop Detection	-	EA
21	Signal Detector Housing	-	EA
22	Incidental Signal Work	-	LS



LEGEND

- Centerline
- Mainline Milling and Paving
- Approaches Milling and Paving
- Ramps



Segment 21 - Pippin Dr: Pippet to Keller

Length: 1,420 LFT
Width: 26 LFT
RS Thickness: 2 IN

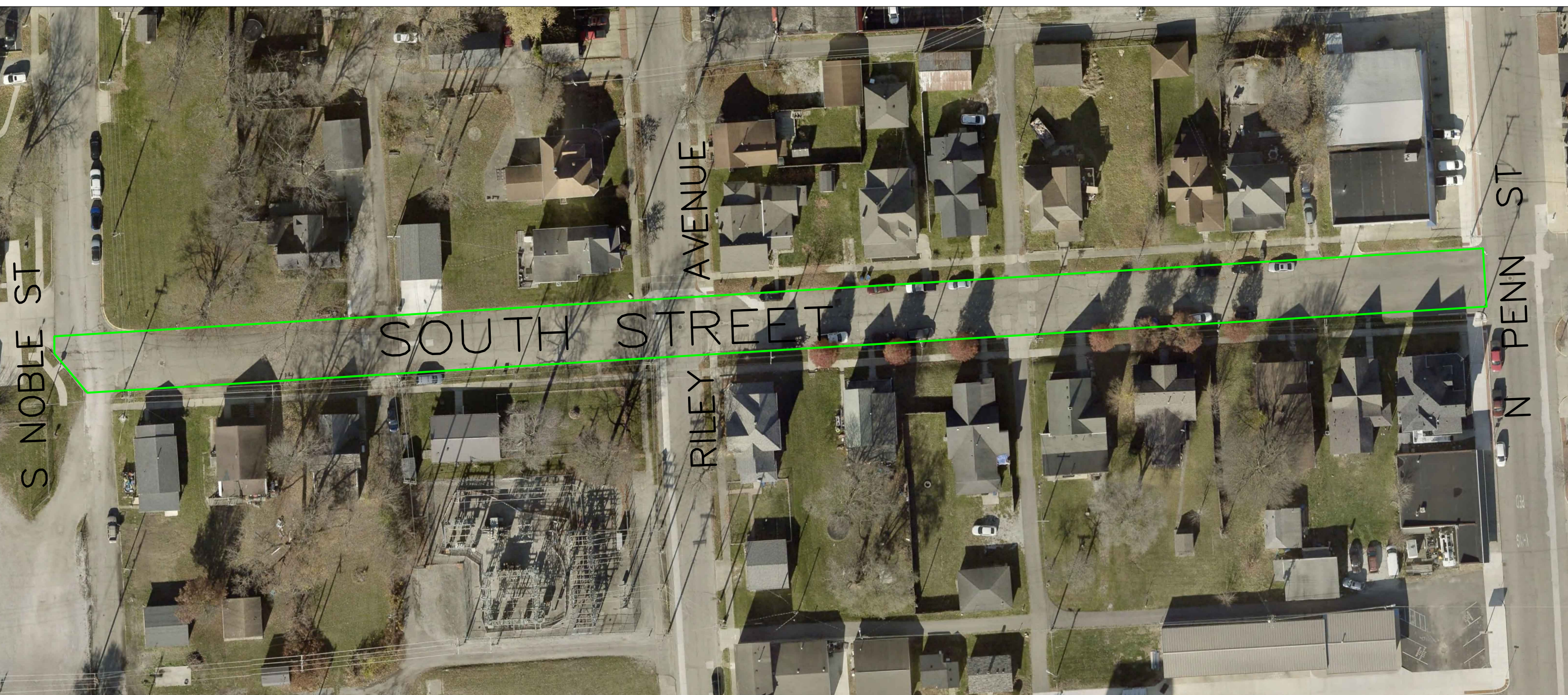
Item No.	Description	Quantity	Units
1	Mobilization & Demobilization	1	LS
2	Milling, Asphalt, 1.5 IN	3,998	SYS
3	Milling, Approaches	24	SYS
4	HMA Surface, Type B, 12.5 mm	440	TON
5	HMA for Approaches, Type B	3	TON
6	HMA Wedge and Level, Type B	22	TON
7	HMA Base Repair, Type B, 25.0 mm (6" depth)	66	TON
8	Sidewalk Concrete, Remove	12	SYS
9	Curb, Remove	22	LFT
10	Curb Ramp, Concrete	16	SYS
11	Detectable Warning Surfaces	3	SYS
12	Line, Thermoplastic, Solid, Yellow, 4 IN	-	LFT
13	Line, Thermoplastic, Solid, White, 4 IN	-	LFT
14	Line, Thermoplastic, Solid, White, 6 IN	-	LFT
15	Pavement Message Marking, Thermoplastic, Lane Indication Arrow	-	EA
16	Transverse Marking, Thermoplastic, Crosswalk, White, 6 IN	-	LFT
17	Transverse Marking, Thermoplastic, Crosswalk, White, 24 IN	-	LFT
18	Transverse Marking, Thermoplastic, Stop Line, White, 24 IN	13	LFT
19	Transverse Marking, Thermoplastic, Crosshatch Line, Yellow, 12 IN	-	LFT
20	6x6 Loop Detection	-	EA
21	Signal Detector Housing	-	EA
22	Incidental Signal Work	-	LS



Segment 20 - Center St: Osage to South

Length: 486 LFT
Width: 36 LFT
RS Thickness: 2 IN

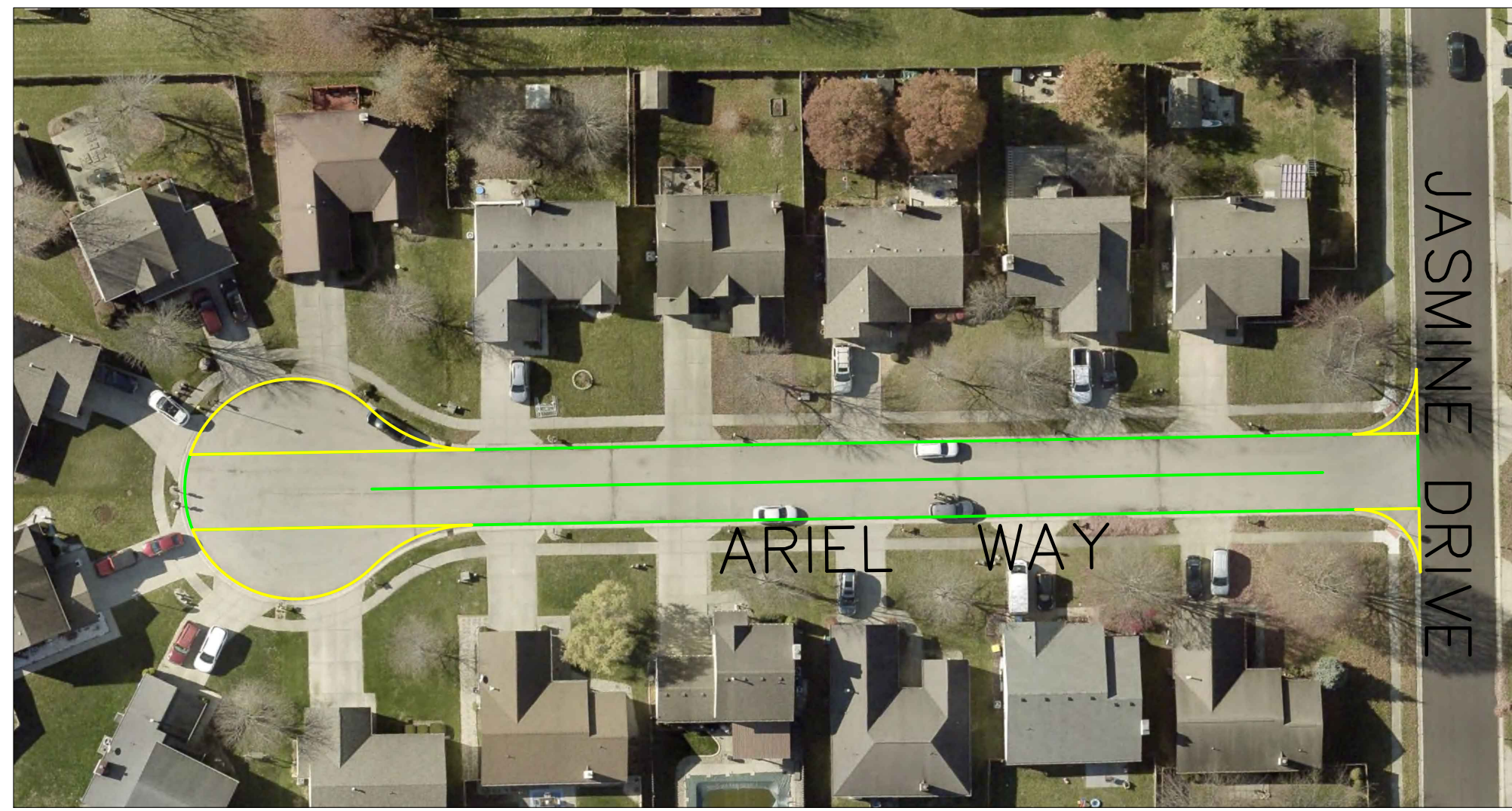
Item No.	Description	Quantity	Units
1	Mobilization & Demobilization	1	LS
2	Milling, Asphalt, 1.5 IN	2,006	SYS
3	Milling, Approaches	31	SYS
4	HMA Surface, Type B, 12.5 mm	221	TON
5	HMA for Approaches, Type B	4	TON
6	HMA Wedge and Level, Type B	12	TON
7	HMA Base Repair, Type B, 25.0 mm (6" depth)	34	TON
8	Sidewalk Concrete, Remove	12	SYS
9	Curb, Remove	22	LFT
10	Curb Ramp, Concrete	16	SYS
11	Detectable Warning Surfaces	3	SYS
12	Line, Thermoplastic, Solid, Yellow, 4 IN	-	LFT
13	Line, Thermoplastic, Solid, White, 4 IN	-	LFT
14	Line, Thermoplastic, Solid, White, 6 IN	-	LFT
15	Pavement Message Marking, Thermoplastic, Lane Indication Arrow	-	EA
16	Transverse Marking, Thermoplastic, Crosswalk, White, 6 IN	-	LFT
17	Transverse Marking, Thermoplastic, Crosswalk, White, 24 IN	-	LFT
18	Transverse Marking, Thermoplastic, Stop Line, White, 24 IN	18	LFT
19	Transverse Marking, Thermoplastic, Crosshatch Line, Yellow, 12 IN	-	LFT
20	6x6 Loop Detection	-	EA
21	Signal Detector Housing	-	EA
22	Incidental Signal Work	-	LS



Segment 19 - South St: Noble to Pennsylvania

Length: 887 LFT
Width: 36 LFT
RS Thickness: 2 IN

Item No.	Description	Quantity	Units
1	Mobilization & Demobilization	1	LS
2	Milling, Asphalt, 1.5 IN	3,512	SYS
3	Milling, Approaches	-	SYS
4	HMA Surface, Type B, 12.5 mm	387	TON
5	HMA for Approaches, Type B	-	TON
6	HMA Wedge and Level, Type B	20	TON
7	HMA Base Repair, Type B, 25.0 mm (6" depth)	58	TON
8	Sidewalk Concrete, Remove	30	SYS
9	Curb, Remove	55	LFT
10	Curb Ramp, Concrete	40	SYS
11	Detectable Warning Surfaces	8	SYS
12	Line, Thermoplastic, Solid, Yellow, 4 IN	-	LFT
13	Line, Thermoplastic, Solid, White, 4 IN	-	LFT
14	Line, Thermoplastic, Solid, White, 6 IN	-	LFT
15	Pavement Message Marking, Thermoplastic, Lane Indication Arrow	-	EA
16	Transverse Marking, Thermoplastic, Crosswalk, White, 6 IN	-	LFT
17	Transverse Marking, Thermoplastic, Crosswalk, White, 24 IN	-	LFT
18	Transverse Marking, Thermoplastic, Stop Line, White, 24 IN	36	LFT
19	Transverse Marking, Thermoplastic, Crosshatch Line, Yellow, 12 IN	-	LFT
20	6x6 Loop Detection	-	EA
21	Signal Detector Housing	-	EA
22	Incidental Signal Work	-	LS



Segment 23 - Ariel Way: Cul-de-sac to Jasmine

Length: 417 LFT
Width: 26 LFT
RS Thickness: 2 IN

Item No.	Description	Quantity	Units
1	Mobilization & Demobilization	1	LS
2	Milling, Asphalt, 1.5 IN	1,229	SYS
3	Milling, Approaches	330	SYS
4	HMA Surface, Type B, 12.5 mm	136	TON
5	HMA for Approaches, Type B	37	TON
6	HMA Wedge and Level, Type B	7	TON
7	HMA Base Repair, Type B, 25.0 mm (6" depth)	21	TON
8	Sidewalk Concrete, Remove	-	SYS
9	Curb, Remove	-	LFT
10	Curb Ramp, Concrete	-	SYS
11	Detectable Warning Surfaces	-	SYS
12	Line, Thermoplastic, Solid, Yellow, 4 IN	-	LFT
13	Line, Thermoplastic, Solid, White, 4 IN	-	LFT
14	Line, Thermoplastic, Solid, White, 6 IN	-	LFT
15	Pavement Message Marking, Thermoplastic, Lane Indication Arrow	-	EA
16	Transverse Marking, Thermoplastic, Crosswalk Line, White, 6 IN	-	LFT
17	Transverse Marking, Thermoplastic, Crosswalk, White, 24 IN	-	LFT
18	Transverse Marking, Thermoplastic, Stop Line, White, 24 IN	13	LFT
19	Transverse Marking, Thermoplastic, Crosshatch Line, Yellow, 12 IN	-	LFT
20	6x6 Loop Detection	-	EA
21	Signal Detector Housing	-	EA
22	Incidental Signal Work	-	LS



LEGEND

- Centerline
- Mainline Milling and Paving
- Approaches Milling and Paving
- Ramps

Segment 22 - Collins Wy: Fern to Layton

Length: 1,299 LFT
Width: 26 LFT
RS Thickness: 2 IN

Item No.	Description	Quantity	Units
1	Mobilization & Demobilization	1	LS
2	Milling, Asphalt, 1.5 IN	3,682	SYS
3	Milling, Approaches	58	SYS
4	HMA Surface, Type B, 12.5 mm	406	TON
5	HMA for Approaches, Type B	7	TON
6	HMA Wedge and Level, Type B	21	TON
7	HMA Base Repair, Type B, 25.0 mm (6" depth)	63	TON
8	Sidewalk Concrete, Remove	36	SYS
9	Curb, Remove	66	LFT
10	Curb Ramp, Concrete	48	SYS
11	Detectable Warning Surfaces	9	SYS
12	Line, Thermoplastic, Solid, Yellow, 4 IN	-	LFT
13	Line, Thermoplastic, Solid, White, 4 IN	-	LFT
14	Line, Thermoplastic, Solid, White, 6 IN	-	LFT
15	Pavement Message Marking, Thermoplastic, Lane Indication Arrow	-	EA
16	Transverse Marking, Thermoplastic, Crosswalk Line, White, 6 IN	-	LFT
17	Transverse Marking, Thermoplastic, Crosswalk, White, 24 IN	-	LFT
18	Transverse Marking, Thermoplastic, Stop Line, White, 24 IN	13	LFT
19	Transverse Marking, Thermoplastic, Crosshatch Line, Yellow, 12 IN	-	LFT
20	6x6 Loop Detection	-	EA
21	Signal Detector Housing	-	EA
22	Incidental Signal Work	-	LS



Segment 24 - Peppermint Ct: Cul-de-sac to Jasmine

Length: 317 LFT
Width: 22 LFT
RS Thickness: 2 IN

Item No.	Description	Quantity	Units
1	Mobilization & Demobilization	1	LS
2	Milling, Asphalt, 1.5 IN	817	SYS
3	Milling, Approaches	428	SYS
4	HMA Surface, Type B, 12.5 mm	90	TON
5	HMA for Approaches, Type B	48	TON
6	HMA Wedge and Level, Type B	5	TON
7	HMA Base Repair, Type B, 25.0 mm (6" depth)	14	TON
8	Sidewalk Concrete, Remove	12	SYS
9	Curb, Remove	22	LFT
10	Curb Ramp, Concrete	16	SYS
11	Detectable Warning Surfaces	3	SYS
12	Line, Thermoplastic, Solid, Yellow, 4 IN	-	LFT
13	Line, Thermoplastic, Solid, White, 4 IN	-	LFT
14	Line, Thermoplastic, Solid, White, 6 IN	-	LFT
15	Pavement Message Marking, Thermoplastic, Lane Indication Arrow	-	EA
16	Transverse Marking, Thermoplastic, Crosswalk Line, White, 6 IN	-	LFT
17	Transverse Marking, Thermoplastic, Crosswalk, White, 24 IN	-	LFT
18	Transverse Marking, Thermoplastic, Stop Line, White, 24 IN	11	LFT
19	Transverse Marking, Thermoplastic, Crosshatch Line, Yellow, 12 IN	-	LFT
20	6x6 Loop Detection	-	EA
21	Signal Detector Housing	-	EA
22	Incidental Signal Work	-	LS

Segment 26 - Lavender Dr: Jasmine to Blue

Length: 919 LFT
Width: 26 LFT
RS Thickness: 2 IN

Item No.	Description	Quantity	Units
1	Mobilization & Demobilization	1	LS
2	Milling, Asphalt, 1.5 IN	2,687	SYS
3	Milling, Approaches	86	SYS
4	HMA Surface, Type B, 12.5 mm	296	TON
5	HMA for Approaches, Type B	10	TON
6	HMA Wedge and Level, Type B	15	TON
7	HMA Base Repair, Type B, 25.0 mm (6" depth)	45	TON
8	Sidewalk Concrete, Remove	24	SYS
9	Curb, Remove	44	LFT
10	Curb Ramp, Concrete	32	SYS
11	Detectable Warning Surfaces	6	SYS
12	Line, Thermoplastic, Solid, Yellow, 4 IN	-	LFT
13	Line, Thermoplastic, Solid, White, 4 IN	-	LFT
14	Line, Thermoplastic, Solid, White, 6 IN	-	LFT
15	Pavement Message Marking, Thermoplastic, Lane Indication Arrow	-	EA
16	Transverse Marking, Thermoplastic, Crosswalk Line, White, 6 IN	-	LFT
17	Transverse Marking, Thermoplastic, Crosswalk, White, 24 IN	-	LFT
18	Transverse Marking, Thermoplastic, Stop Line, White, 24 IN	30	LFT
19	Transverse Marking, Thermoplastic, Crosshatch Line, Yellow, 12 IN	-	LFT
20	6x6 Loop Detection	-	EA
21	Signal Detector Housing	-	EA
22	Incidental Signal Work	-	LS



Segment 25 - Lemon Grass Ct: Cul-de-sac to Jasmine

Length: 232 LFT
Width: 22 LFT
RS Thickness: 2 IN

Item No.	Description	Quantity	Units
1	Mobilization & Demobilization	1	LS
2	Milling, Asphalt, 1.5 IN	622	SYS
3	Milling, Approaches	364	SYS
4	HMA Surface, Type B, 12.5 mm	69	TON
5	HMA for Approaches, Type B	41	TON
6	HMA Wedge and Level, Type B	4	TON
7	HMA Base Repair, Type B, 25.0 mm (6" depth)	11	TON
8	Sidewalk Concrete, Remove	-	SYS
9	Curb, Remove	-	LFT
10	Curb Ramp, Concrete	-	SYS
11	Detectable Warning Surfaces	-	SYS
12	Line, Thermoplastic, Solid, Yellow, 4 IN	-	LFT
13	Line, Thermoplastic, Solid, White, 4 IN	-	LFT
14	Line, Thermoplastic, Solid, White, 6 IN	-	LFT
15	Pavement Message Marking, Thermoplastic, Lane Indication Arrow	-	EA
16	Transverse Marking, Thermoplastic, Crosswalk Line, White, 6 IN	-	LFT
17	Transverse Marking, Thermoplastic, Crosswalk, White, 24 IN	-	LFT
18	Transverse Marking, Thermoplastic, Stop Line, White, 24 IN	11	LFT
19	Transverse Marking, Thermoplastic, Crosshatch Line, Yellow, 12 IN	-	LFT
20	6x6 Loop Detection	-	EA
21	Signal Detector Housing	-	EA
22	Incidental Signal Work	-	LS



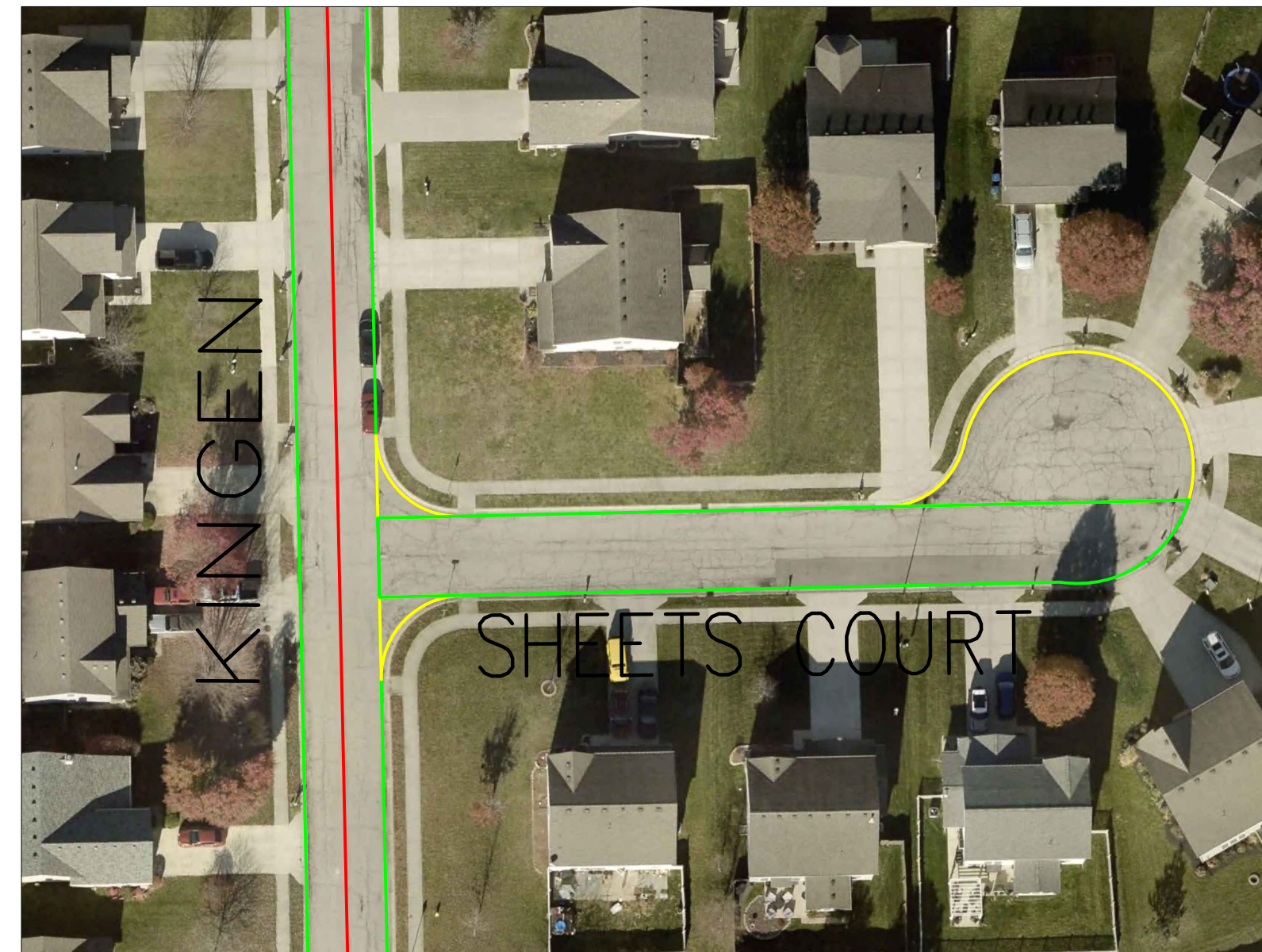


Segment 27 - Ginger Cir: Jasmine to Cul-de-sac
 Length: 438 LFT
 Width: 22 LFT
 RS Thickness: 2 IN

Item No.	Description	Quantity	Units
1	Mobilization & Demobilization	1	LS
2	Milling, Asphalt, 1.5 IN	1,131	SYS
3	Milling, Approaches	365	SYS
4	HMA Surface, Type B, 12.5 mm	125	TON
5	HMA for Approaches, Type B	41	TON
6	HMA Wedge and Level, Type B	7	TON
7	HMA Base Repair, Type B, 25.0 mm (6" depth)	19	TON
8	Sidewalk Concrete, Remove	-	SYS
9	Curb, Remove	-	LFT
10	Curb Ramp, Concrete	-	SYS
11	Detectable Warning Surfaces	-	SYS
12	Line, Thermoplastic, Solid, Yellow, 4IN	-	LFT
13	Line, Thermoplastic, Solid, White, 4IN	-	LFT
14	Line, Thermoplastic, Solid, White, 6IN	-	LFT
15	Pavement Message Marking, Thermoplastic, Lane Indication Arrow	-	EA
16	Transverse Marking, Thermoplastic, Crosswalk Line, White, 6IN	-	LFT
17	Transverse Marking, Thermoplastic, Crosswalk, White, 24IN	-	-
18	Transverse Marking, Thermoplastic, Stop Line, White, 24IN	11	LFT
19	Transverse Marking, Thermoplastic, Crosshatch Line, Yellow, 12IN	-	LFT
20	6x6 Loop Detection	-	EA
21	Signal Detector Housing	-	EA
22	Incidental Signal Work	-	LS



LEGEND	
Centerline	
Mainline Milling and Paving	
Approaches Milling and Paving	
Ramps	

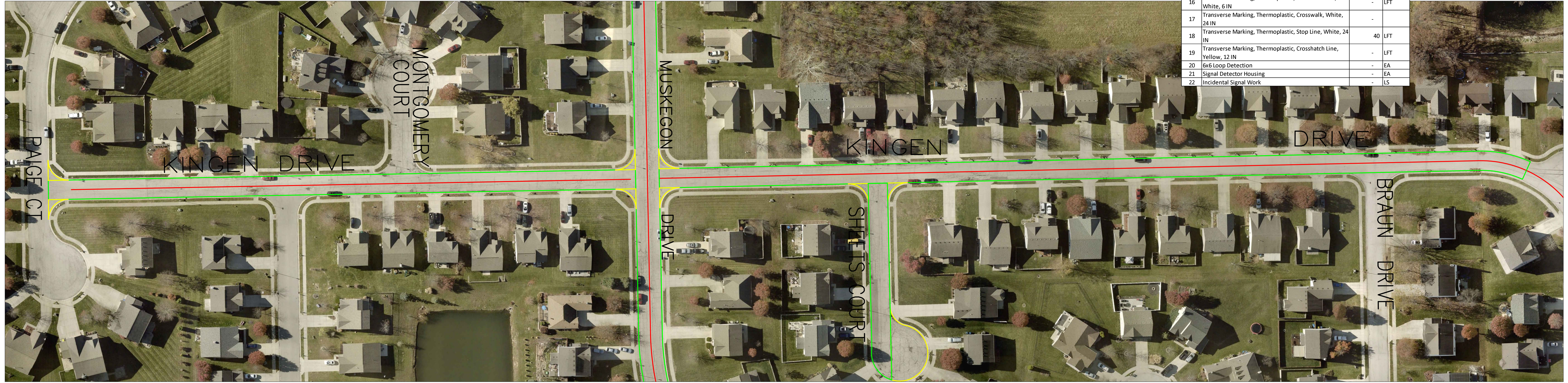


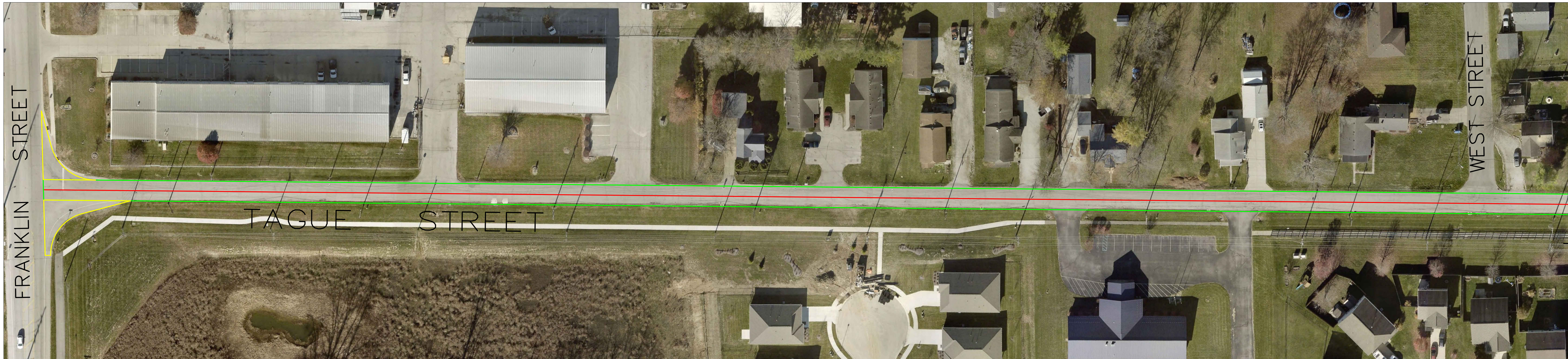
Segment 29 - Sheets Ct: Kingen Dr to Cul-de-sac
 Length: 253 LFT
 Width: 26 LFT
 RS Thickness: 2 IN

Item No.	Description	Quantity	Units
1	Mobilization & Demobilization	1	LS
2	Milling, Asphalt, 1.5 IN	744	SYS
3	Milling, Approaches	396	SYS
4	HMA Surface, Type B, 12.5 mm	82	TON
5	HMA for Approaches, Type B	44	TON
6	HMA Wedge and Level, Type B	5	TON
7	HMA Base Repair, Type B, 25.0 mm (6" depth)	13	TON
8	Sidewalk Concrete, Remove	12	SYS
9	Curb, Remove	22	LFT
10	Curb Ramp, Concrete	16	SYS
11	Detectable Warning Surfaces	3	SYS
12	Line, Thermoplastic, Solid, Yellow, 4IN	-	LFT
13	Line, Thermoplastic, Solid, White, 4IN	-	LFT
14	Line, Thermoplastic, Solid, White, 6IN	-	LFT
15	Pavement Message Marking, Thermoplastic, Lane Indication Arrow	-	EA
16	Transverse Marking, Thermoplastic, Crosswalk Line, White, 6IN	-	LFT
17	Transverse Marking, Thermoplastic, Crosswalk, White, 24IN	-	-
18	Transverse Marking, Thermoplastic, Stop Line, White, 24IN	13	LFT
19	Transverse Marking, Thermoplastic, Crosshatch Line, Yellow, 12IN	-	LFT
20	6x6 Loop Detection	-	EA
21	Signal Detector Housing	-	EA
22	Incidental Signal Work	-	LS

Segment 28 - Kingen Dr: Whisler Dr to Webb Dr
 Length: 2,065 LFT
 Width: 26 LFT
 RS Thickness: 2 IN

Item No.	Description	Quantity	Units
1	Mobilization & Demobilization	1	LS
2	Milling, Asphalt, 1.5 IN	5,687	SYS
3	Milling, Approaches	104	SYS
4	HMA Surface, Type B, 12.5 mm	626	TON
5	HMA for Approaches, Type B	12	TON
6	HMA Wedge and Level, Type B	32	TON
7	HMA Base Repair, Type B, 25.0 mm (6" depth)	94	TON
8	Sidewalk Concrete, Remove	132	SYS
9	Curb, Remove	242	LFT
10	Curb Ramp, Concrete	176	SYS
11	Detectable Warning Surfaces	33	SYS
12	Line, Thermoplastic, Solid, Yellow, 4IN	-	LFT
13	Line, Thermoplastic, Solid, White, 4IN	-	LFT
14	Line, Thermoplastic, Solid, White, 6IN	-	LFT
15	Pavement Message Marking, Thermoplastic, Lane Indication Arrow	-	EA
16	Transverse Marking, Thermoplastic, Crosswalk Line, White, 6IN	-	LFT
17	Transverse Marking, Thermoplastic, Crosswalk, White, 24IN	-	-
18	Transverse Marking, Thermoplastic, Stop Line, White, 24IN	40	LFT
19	Transverse Marking, Thermoplastic, Crosshatch Line, Yellow, 12IN	-	LFT
20	6x6 Loop Detection	-	EA
21	Signal Detector Housing	-	EA
22	Incidental Signal Work	-	LS

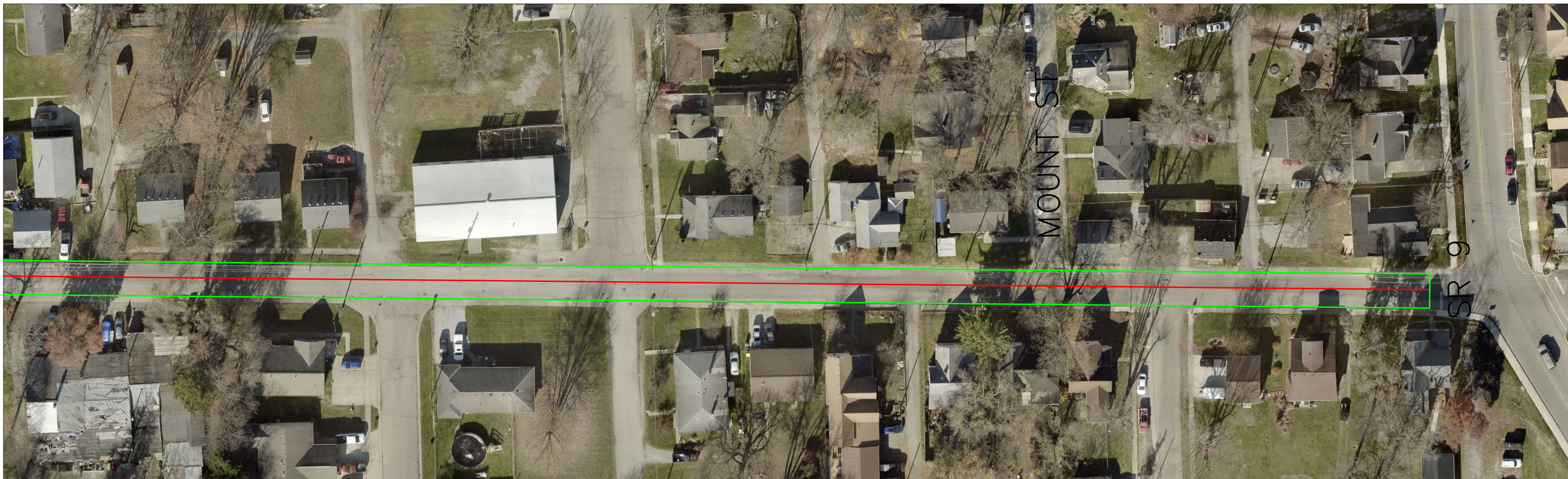




Segment Segment 30 - Tague St: Franklin to SR 9

Length: 4,230 LFT
 Width: 22 LFT
 RS Thickness: 2 IN

Item No.	Description	Quantity	Units
1	Mobilization & Demobilization	1	LS
2	Milling, Asphalt, 1.5 IN	10,437	SYS
3	Milling, Approaches	771	SYS
4	HMA Surface, Type B, 12.5 mm	1,149	TON
5	HMA for Approaches, Type B	85	TON
6	HMA Wedge and Level, Type B	58	TON
7	HMA Base Repair, Type B, 25.0 mm (6" depth)	173	TON
8	Sidewalk Concrete, Remove	90	SYS
9	Curb, Remove	165	LFT
10	Curb Ramp, Concrete	120	SYS
11	Detectable Warning Surfaces	23	SYS
12	Line, Thermoplastic, Solid, Yellow, 4 IN	8,300	LFT
13	Line, Thermoplastic, Solid, White, 4 IN	130	LFT
14	Line, Thermoplastic, Solid, White, 6 IN	8,300	LFT
15	Pavement Message Marking, Thermoplastic, Lane Indication Arrow	-	EA
16	Transverse Marking, Thermoplastic, Crosswalk Line, White, 6 IN	-	LFT
17	Transverse Marking, Thermoplastic, Crosswalk, White, 24 IN	-	LFT
18	Transverse Marking, Thermoplastic, Stop Line, White, 24 IN	30	LFT
19	Transverse Marking, Thermoplastic, Crosshatch Line, Yellow, 12 IN	-	LFT
20	6x6 Loop Detection	-	EA
21	Signal Detector Housing	-	EA
22	Incidental Signal Work	-	LS



LEGEND

Centerline

Mainline Milling and Paving

Approaches Milling and Paving

Ramps

Segment 31 - Baldwin St: Grant St to Lincoln St

Length: 380 LFT
 Width: 32 LFT
 RS Thickness: 2 IN

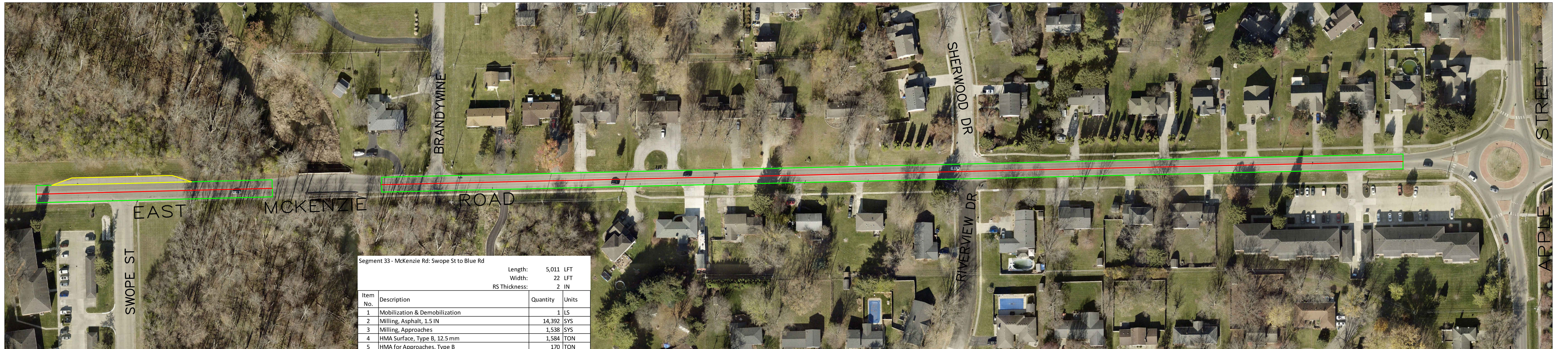
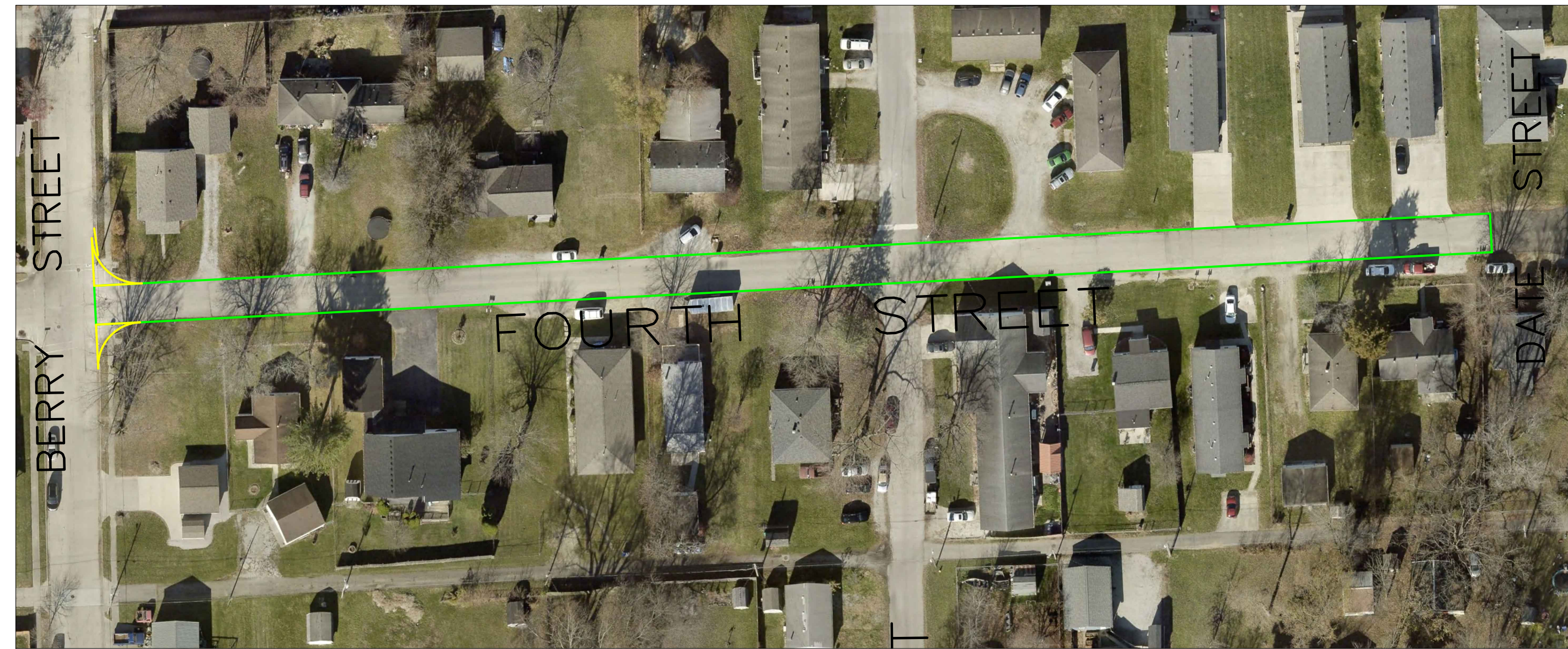
Item No.	Description	Quantity	Units
1	Mobilization & Demobilization	1	LS
2	Milling, Asphalt, 1.5 IN	1,253	SYS
3	Milling, Approaches	18	SYS
4	HMA Surface, Type B, 12.5 mm	138	TON
5	HMA for Approaches, Type B	2	TON
6	HMA Wedge and Level, Type B	7	TON
7	HMA Base Repair, Type B, 25.0mm (6" depth)	21	TON
8	Sidewalk Concrete, Remove	24	SYS
9	Curb, Remove	44	LFT
10	Curb Ramp, Concrete	32	SYS
11	Detectable Warning Surfaces	6	SYS
12	Line, Thermoplastic, Solid, Yellow, 4IN	-	LFT
13	Line, Thermoplastic, Solid, White, 4IN	-	LFT
14	Line, Thermoplastic, Solid, White, 6IN	-	LFT
15	Pavement Message Marking, Thermoplastic, Lane Indication Arrow	-	EA
16	Transverse Marking, Thermoplastic, Crosswalk Line, White, 6 IN	-	LFT
17	Transverse Marking, Thermoplastic, Crosswalk, White, 24 IN	-	LFT
18	Transverse Marking, Thermoplastic, Stop Line, White, 24 IN	15	LFT
19	Transverse Marking, Thermoplastic, Crosshatch Line, Yellow, 12 IN	-	LFT
20	6x6 Loop Detection	-	EA
21	Signal Detector Housing	-	EA
22	Incidental Signal Work	-	LS



Segment 32 - 4th St: Berry St to Date St

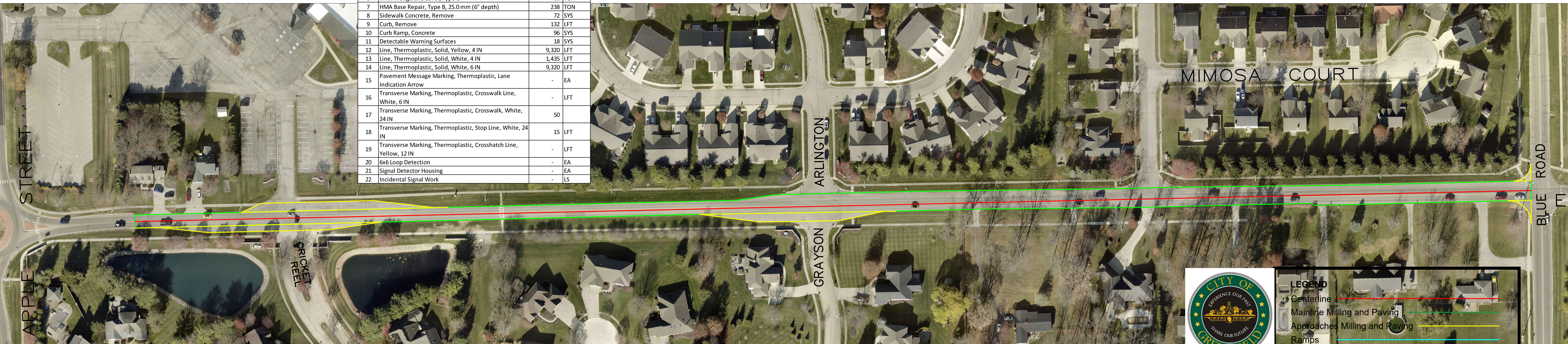
Length: 871 LFT
 Width: 22 LFT
 RS Thickness: 2 IN

Item No.	Description	Quantity	Units
1	Mobilization & Demobilization	1	LS
2	Milling, Asphalt, 1.5 IN	1,936	SYS
3	Milling, Approaches	33	SYS
4	HMA Surface, Type B, 12.5 mm	213	TON
5	HMA for Approaches, Type B	4	TON
6	HMA Wedge and Level, Type B	11	TON
7	HMA Base Repair, Type B, 25.0mm (6" depth)	32	TON
8	Sidewalk Concrete, Remove	12	SYS
9	Curb, Remove	22	LFT
10	Curb Ramp, Concrete	16	SYS
11	Detectable Warning Surfaces	3	SYS
12	Line, Thermoplastic, Solid, Yellow, 4IN	-	LFT
13	Line, Thermoplastic, Solid, White, 4IN	-	LFT
14	Line, Thermoplastic, Solid, White, 6IN	-	LFT
15	Pavement Message Marking, Thermoplastic, Lane Indication Arrow	-	EA
16	Transverse Marking, Thermoplastic, Crosswalk Line, White, 6 IN	70	LFT
17	Transverse Marking, Thermoplastic, Crosswalk, White, 24 IN	-	LFT
18	Transverse Marking, Thermoplastic, Stop Line, White, 24 IN	15	LFT
19	Transverse Marking, Thermoplastic, Crosshatch Line, Yellow, 12 IN	-	LFT
20	6x6 Loop Detection	-	EA
21	Signal Detector Housing	-	EA
22	Incidental Signal Work	-	LS



Segment 33 - McKenzie Rd: Swope St to Blue Rd
 Length: 5,011 LFT
 Width: 22 LFT
 RS Thickness: 2 IN

Item No.	Description	Quantity	Units
1	Mobilization & Demobilization	1	LS
2	Milling, Asphalt, 1.5 IN	14,392	SYS
3	Milling, Approaches	1,538	SYS
4	HMA Surface, Type B, 12.5 mm	1,584	TON
5	HMA for Approaches, Type B	170	TON
6	HMA Wedge and Level, Type B	80	TON
7	HMA Base Repair, Type B, 25.0mm (6" depth)	238	TON
8	Sidewalk Concrete, Remove	72	SYS
9	Curb, Remove	132	LFT
10	Curb Ramp, Concrete	96	SYS
11	Detectable Warning Surfaces	18	SYS
12	Line, Thermoplastic, Solid, Yellow, 4IN	9,320	LFT
13	Line, Thermoplastic, Solid, White, 4IN	1,435	LFT
14	Line, Thermoplastic, Solid, White, 6IN	9,320	LFT
15	Pavement Message Marking, Thermoplastic, Lane Indication Arrow	-	EA
16	Transverse Marking, Thermoplastic, Crosswalk Line, White, 6 IN	-	LFT
17	Transverse Marking, Thermoplastic, Crosswalk, White, 24 IN	50	LFT
18	Transverse Marking, Thermoplastic, Stop Line, White, 24 IN	15	LFT
19	Transverse Marking, Thermoplastic, Crosshatch Line, Yellow, 12 IN	-	LFT
20	6x6 Loop Detection	-	EA
21	Signal Detector Housing	-	EA
22	Incidental Signal Work	-	LS



LEGEND	
	Centerline
	Mainline Milling and Paving
	Approaches Milling and Paving
	Ramps



LEGEND	
Centerline	
Mainline Milling and Paving	
Approaches Milling and Paving	
Ramps	



Segment 34 - Oak Blvd: Park Ave to McKenzie Rd

Length: 2,640 LFT
 Width: 38 LFT
 RS Thickness: 2 IN

Item No.	Description	Quantity	Units
1	Mobilization & Demobilization	1	LS
2	Milling, Asphalt, 1.5 IN	10,900	SYS
3	Milling, Approaches	717	SYS
4	HMA Surface, Type B, 12.5 mm	1,199	TON
5	HMA for Approaches, Type B	79	TON
6	HMA Wedge and Level, Type B	60	TON
7	HMA Base Repair, Type B, 25.0 mm (6" depth)	180	TON
8	Sidewalk Concrete, Remove	60	SYS
9	Curb, Remove	110	LFT
10	Curb Ramp, Concrete	80	SYS
11	Detectable Warning Surfaces	15	SYS
12	Line, Thermoplastic, Solid, Yellow, 4 IN	-	LFT
13	Line, Thermoplastic, Solid, White, 4 IN	-	LFT
14	Line, Thermoplastic, Solid, White, 6 IN	-	LFT
15	Pavement Message Marking, Thermoplastic, Lane Indication Arrow	-	EA
16	Transverse Marking, Thermoplastic, Crosswalk Line, White, 6 IN	300	LFT
17	Transverse Marking, Thermoplastic, Crosswalk, White, 24 IN	-	LFT
18	Transverse Marking, Thermoplastic, Stop Line, White, 24 IN	40	LFT
19	Transverse Marking, Thermoplastic, Crosshatch Line, Yellow, 12 IN	-	LFT
20	6x6 Loop Detection	-	EA
21	Signal Detector Housing	-	EA
22	Incidental Signal Work	-	LS

